



# CONSERVATION NEWS

The Newsletter of the Australian Conservation Foundation. May 1994, Volume 26, No.2

**After** renewed assessment of the progress of the McArthur River mine in NT, the first mine to be fast-tracked by the Federal Government, ACF has stepped up its efforts to protect the high conservation values likely to be affected by the project and to highlight the problems inherent in fast-tracking.

A recent ACF and NT Environment Centre visit to the site of the coastal barge-loading facility for the massive lead/zinc mine, reaffirmed ACF's fears about the poor

roundly condemned by environmental scientists, academics, sections of the fishing industry and Aboriginal organisations for its lack of baseline information and inadequate details of barge design and risk assessment.

The entire EIS was approved in record time, placing pressure on interested parties to respond to issues of major significance. The Commonwealth Environment Protection Agency gave agencies such as the Australian Nature Conservation Agency just four days to assess the Supplement to the EIS!

## FAST-TRACKING

### AND THE McARTHUR RIVER MINE

standard of environmental impact assessment which fast-tracking inevitably produces. ACF investigated the site by air

and sea, and met with some of the Yanyuwa elders concerned about the health of their sea-country.

Of principle concern is the threat to the marine environment of heavy metal contamination from a loading facility and transport activities. Nearby are the Sir Edward Pellew Islands and surrounding seagrass beds which are on the interim list of the Register of the National Estate. It is significant for populations of dugong, turtle, prawn, crab and fish species. These are fundamental to the \$40 million prawn industry, and of immense cultural and economic importance to Aboriginal people. The decision to give carriage of the environmental impact assessment process to the NT Government in 1992 was opposed by conservationists for two reasons: there were important Commonwealth responsibilities at stake and the NT assessment procedures were considered inferior to those of the Commonwealth. The quality of the EIS itself was



The conclusions were extremely worrying.

In relation to the impact from the barge-loading facility, CEPA concluded that 'due to the lack of site-specific data, CEPA is unable to comment in detail on potential impacts at the local scale'. The NT Conservation Commission acknowledged the poor standard of risk assessment: '...there remains a likelihood of spillage occurring over the life of the mine. On the material provided in the EIS for assessment it is not possible to estimate the likely rate or size of such spillage... contingency plans for spilt concentrate and

oil were not detailed in the final EIS'.

Rather than address the criticism raised through the impact assessment process prior to approval, both governments agreed to a flawed process, where important concerns were relegated to later evaluation through a series of Environmental Management Plans. Imposing tight environmental management practices on projects in full swing would be difficult.

cont. page 2

#### What you can do – write to:

1. Environment Minister, Senator John Faulkner, Parliament House, Canberra, urging him to commission a public enquiry into fast-tracking and its application to the McArthur River mine.
2. Mr N. Fussell, Chairperson, Mt Isa Mines Holdings Ltd, 410 Ann Street, Brisbane, Qld, 4000, requesting that MIM halt the construction of the barge loading facility at Bing Bong pastoral station and immediately investigate alternative land-based transport options.



The Australian Conservation Foundation  
is a national, non-profit organisation working to  
achieve an ecologically sustainable society.

**President David Yencken**  
**Executive Director Tricia Caswell**

#### NATIONAL OFFICES

##### Victoria

340 Gore St, Fitzroy, Victoria, 3065  
Ph: (03) 416 1166 Fax: (03) 416 0767

##### New South Wales

33 George Street, Sydney, 2000  
Ph: (02) 247 4285 Fax: (02) 247 1206

##### Canberra

1st floor, Cinema Centre, Bunda St,  
Canberra, 2600  
Ph: (06) 247 2472 Fax: (06) 247 5779  
National Liaison Officer Ph: (06) 247 3013

#### OTHER OFFICES

##### Western Australia

Lotteries House, 79 Stirling St, Perth, WA, 6000  
Ph: (09) 220 0669

##### South Australia

120 Wakefield St, Adelaide, SA, 5000  
Ph: (08) 232 2566

ACF has 29 member-run branches nationwide.

**CONSERVATION NEWS** is published quarterly by  
Australian Conservation Foundation Inc.

ARBN 007 498482

340 Gore St, Fitzroy, Victoria, 3065.

**Editor and layout** Louise Ray

**Printed by** WestWeb

61 Leather St, Breakwater, Vic, 3219  
**Circulation** 17,000

Subscriptions are available for \$39 per annum.

The views expressed in *Conservation News*  
are not necessarily those of ACF.

... continued from page 1

The mining company's recent alteration to the location and design of the barge-loading facility, without formal and public EIS, is further evidence of the way in which major projects are allowed to conduct critical environmental procedures 'on the run'. Construction has begun at the mine site and barge loading facility, yet conditions of Federal Government approval seem not to have been met. Two years of monitoring the assessment procedures has illustrated how flimsy were Government assurances in 1992 that fast-tracking would not result in a lowering of environmental standards.

ACF has written to the new Minister urging him to inquire into fast-tracking and its application at McArthur River. Ultimately ACF wishes to see a safe transport option adopted at the site and the introduction of rigorous national procedures to protect the environment.

## DIRECTOR'S REPORT

### BY TRICIA CASWELL

Jervis Bay is saved again, this time from the fate of an armaments base and wharf. Its very special beauty and life forms are well known to many Australians.

It is fantastic that ACF was able to work so closely with the long-standing, dedicated local environmentalists who have taught the rest of us so much about the treasures of Jervis Bay, and that we convinced the Federal Cabinet to change its mind. The lobbying, the letters, the rallies and the surveys all helped in this victory.

We should not underestimate how important this campaign has been to remind us of how effective we can be when we combine our skills and work as one. Many thanks to all concerned, especially the local campaigners, Jacquie Gillen, Peter Garrett, Diana Lindsay and Sue Salmon for their endless commitment.

The East Coast Armaments Complex has not, unfortunately, disappeared entirely. A public inquiry is to be held to determine the suitability of Point Wilson in Victoria as an alternative site. At the same time, a state-based environmental assessment is to be made on nearby Point Lillias as the site for the relocation of Coode Island.

The ACF has welcomed the open inquiry, but we still believe other options should be canvassed for the arms base. We also believe that Coode Island should move to West Point Wilson as recommended by the original Taskforce, and that the outcome of the current proposal will be environmentally unacceptable. We are dedicated to helping find an environment-

ally sound solution. So we continue to insist that the very best environmental standards must apply and be consistent in the examination of Point Wilson and Point Lillias.

ACF Executive has set up a sub-committee comprising David Yencken, Peter Brotherton, Michael Krockenberger and myself to oversee the next stage. We will keep you informed.

Meanwhile, we are awaiting the final report of the Shoalwater Bay inquiry. Hopefully, we will have another victory in protecting a marvellous part of Australia's east coast. The report is due the end of May.

Campaigns like Jervis Bay and Shoalwater Bay will always be with us. At the same time, however, we must pursue our broad agenda of greening all parts of industry, government and the community. Our first ever budget submission to the Federal Government demonstrated how important the connections between a healthy environment and a healthy economy are to us all. Influencing economic directions is key to survival, but it is hard and ongoing. The Federal budget and the White Paper on Employment must be "greened" for the future.

To meet such major challenges we need lots of ideas, resources, support and dedication. In order to help continue our campaigns, we are celebrating Peter Garrett's ascendancy as our new Patron at a black tie dinner in Melbourne on August 4th. If you would like to be there, please call Diana Davis in our Melbourne office.

In August 1993, ACF  
bought the building it

### The Greening of ACF

example of ACF's com-  
mitment to sustainable

cities, one of our key objectives.  
had been leasing as its headquarters since 1989. As one of his first initiatives the new ACF President, David Yencken, has set in motion a project to refit ACF's headquarters as a model of environmentally sensitive design and management.

David Yencken strongly believes that ACF's own building should reflect its ideals and objectives. He also believes that there is a great opportunity to use the redesign and refitting to demonstrate what can and should be done with old and new buildings in Australian cities. The project is therefore planned to provide a model process, as well as a model product and will be an

To carry out a project of this kind meticulously and carefully requires thorough analysis and planning. The project team, from ACF and the University of Melbourne will therefore be concentrating on investigations, documentation of the existing conditions and preliminary design during the balance of 1994.

**We invite any businesses or individuals interested in contributing assistance or ideas, whether skills, finance or in kind, to contact the project team at ACF through Diana Haby, on 03 416 1166.**



# WATER – A VITAL RESOURCE

## ● **The United Nations declared World Day for Water on 22 March.**

This provided ACF with an excellent opportunity to raise public awareness of threats to global water resources. The ACF Water Campaign arranged a full page advertisement in *The Australian* on the day, with a message emphasising the increasing pressure from population and development on the global freshwater resource. It highlighted the impact on, for example, Australia's decreasing inland fish stocks, and problems with blue-green algae, salinity and sewage pollution. The ACF Water Campaign also produced a high quality 30 second TV commercial, encouraging individual action to protect our freshwater. ACF Water Campaign Convener, Sue Salmon, did 14 radio interviews around the country on World Day for Water, raising public awareness of the threats to our water and potential solutions.

## ● **Opposition to Government moves against Clean Waters Act.**

ACF's Sue Salmon has organised a coalition of groups (including Clean Up Australia, Greenpeace, Nature Conservation Council, National Parks Association, NSW Shellfish Association, Ocean Watch, and Surfrider Foundation) to oppose the NSW Government's proposal to downgrade standards set under the Clean Waters Act to allow a 400% increase in nitrogen allowed to be discharged to the Hawksbury Nepean River system. The groups are strongly supporting a move by NSW Independent, Dr Peter MacDonald, to disallow the regulation in the Parliament. The groups want a strong commitment from the Premier that the Government will provide the right sewerage management strategy for the affected communities in the Picton and Port Stephen regions.

## ● **Government Pricing Tribunal moves supported by ACF**

Recently ACF requested that the Government Pricing Tribunal undertake audits of the Sydney Water Board's capital works program. ACF has received a positive but modified response, indicating that the GPT intends to investigate capital works audits to see if they result in benefits that justify the costs through embarking on a pilot audit. It has also urged the Water Board and other relevant authorities to consider the case for the compulsory installation of water meters for individual dwellings in new blocks of units.

Although we live on a hot, dry continent most of us take water for granted; whether it's turning on a tap or being able to swim, sail or fish, we assume that the water will be clean, clear and available.

However, from the forests to the city, our waterways are under threat. Catchments are being logged, wetlands cleared, rivers are choking with sediment and algae, and the runoff from our cities is polluting our rivers, creeks and bays.

ACF is determined to arrest the decline in water quality of our waterways. It won't be easy – the solutions must accommodate the river systems, not state council and other bureaucratic boundaries.

● **Please help us by contributing to this year's ACF Water appeal,** and help us ensure that our water ways are protected. To save time and postage, call 008 332 510 or 03 416 1166 and donate by credit card.

## The 1994-1995 Federal Budget's *Priorities for the Environment*

ACF broke new ground in March this year when it launched its first Federal Budget submission, ***Priorities for the environment***. The visionary and far-reaching strategy insists that efforts to strengthen and develop our economy must also achieve environmental sustainability, reduce unemployment, encourage economic growth and the strategy lists measures necessary to achieve these goals.

These would be achieved through:

- promotion of qualitative growth,
- protecting Australia's heritage,
- promoting efficient production and consumption,
- renewing public investment and restoring public revenue,
- meeting obligations for social justice and reconciliation,
- creating clean, green cities,
- shifting taxes from labour to resources,
- creating new processes and institutions for better management.

ACF praised the Green Budget Submission tabled by the Australian Democrats for its focus and coverage of environment initiatives which would promote a healthy economy and protected environment. When brought down on May 10, however, the Federal Budget was deemed to be certainly not a dynamic one for Australia's environment. The environment portfolio budget is down on last year and the environment does not have a high profile across cabinet portfolios. Although the new Minister did not have long to establish major initiatives, ACF's expectations were nowhere near met. The Daintree Rescue Package is welcome, but still dependent upon yet unconfirmed contributions from the Queensland Government. The development of national standards and the National Environment Protection Council are also welcome, along with the lead abatement proposal. ACF is extremely

disappointed that there is no commitment to coastal zone management, establishment of plantation-based timber industries, incentives for clean production or renewable energy options.

Overall the budget is a great anti-climax. It is crucial that the next budget has serious initiatives for environmental protection, industries and jobs.

### **FEDERAL BUDGET 1995/96**

**Next financial year ACF plans to submit a paper for the Federal Budget, as it did in 1994/95. We would like all our members to have the opportunity to participate in the process.**

**The June 1994 ACF Council meeting will be discussing the 94-95 budget submission, so please contact your local councillor or submit ideas in writing to Carolyn Pickburn ACF, 340 Gore St, Fitzroy, by June 25.**



# CAMPAIGN BRIEFS

## CoastWalk Finale

After covering over 1,500 km, the CoastWalkers arrived at Bondi Beach on March 13 to the cheers of a big crowd. They were welcomed by Tricia Caswell and Senator Cheryl Kernot, who both gave warm speeches, recognising the tremendous feat the walkers had accomplished. Warren McLaren, part of the core walking team and sponsored by Paddy Pallin, spoke on behalf of the walkers and the NSW Kelloggs Nutri Grain Surf Life Saving Carnival allowed us to use their facilities on the day. Many thanks to the 550 people who joined the walk over the 122 days and thanks to everyone who signed the petition or rang the 0055 number to register support. Overall it was a great success!

## Sustainable Futures

In South Australia, the Sustainable Futures Group (SFG) has released a report calling on the new Liberal government to seriously start integrating economic and environmental planning. SFG, comprising economists, planners, lawyers and other professionals, was motivated by the failure of the state government's 1993 economic plan to address the environment. SFG's report *Our future state – an ecologically sustainable strategy for South Australia* argues that the government's economic policies, such as its push for cheaper electricity, work directly against its environmental efforts, such as promoting energy conservation. The group argues that environmental costs of economic development should be factored into decision making. It proposes the creation of a South Australia Fund to redirect investment into environmental repair and the development of environmental technology. The report also proposes increased natural resources taxes and the establishment of an ESD Commission to oversee the integration of economic and environmental policies. Information can be obtained from ACF Councillor Alan Perkins (08 302 2356).

## Sky-Rail

ACF has voiced its opposition to the Sky-Rail project proposed for the

Wet Tropics World Heritage Area. The Sky-Rail is a cable-car system from Cairns to Kuranda that would involve cutting a swathe through the Barron Gorge National Park. ACF considers it an inappropriate development in an area environmentalists have fought so hard to protect. Documents released under FOI indicate that the advice of bodies such as the Australian Heritage Commission and the Wet Tropics Management Authority has been ignored and the appropriate channels for environmental advice have been by-passed.

## Lake Pedder

A major campaign to restore Lake Pedder was launched in April by Prof David Bellamy, Dr Bob Brown and Stephen Bronfman of the David Suzuki Foundation. The campaign will be spearheaded by the group Pedder 2000, set up for the restoration campaign. Surveys show that the lake's unique features remain intact, including the sand dunes and cusping on the 3 km beach, underwater since 1972. (see *Habitat* May '94)

## Green Jobs Report

The ACF ACTU Green Jobs draft Report has been released, with the final document due out in June. It is the culmination of a year's research which outlines the potential for jobs growth through development of more ecologically sustainable production, consumption and disposal practices.

## Saulwick Poll

A national poll published in *The Age* and the *Sydney Morning Herald* in April showed that the majority of Australians across all ages believe that environmental protection must be pursued even if there is some reduction in economic growth. Significantly, supporters of all political parties place environmental protection as their top priority.

## ATFC Conference

ACF's National Forest campaigner, Tim Fisher, spoke at the Australian Timber and Forestry Conference in March. His focus was on economic reform and agroforestry investment, calling for an end to the subsidies in logging

old growth forests and promotion of serious investment in large-scale plantation eucalypts for pulpwood.

## Lead in petrol

ACF has welcomed the switch by an estimated 200,000 motorists to unleaded petrol, a prompt to the oil industry to further reduce lead content. The switch to unleaded combined with the reduction in lead content of leaded fuel has given the country its greatest drop in lead pollution ever.

## Melbourne Air Pollution

ACF called on the Victorian Government to develop an action plan to combat the very serious air pollution problems which reached crisis levels in Melbourne during March. ACF proposed 5 major actions, including emissions testing for all vehicles every 100,000 km, developing pollution reduction targets in industry, bans on backyard burning, expansion of the EPA's monitoring network and further reduction in lead and benzene content in petrol.

## Plant Variety Rights

Public interest groups called for a full and open review of the Plant Breeders Rights Bill 1994, asking to have the bill referred to the Senate Standing Committee on the Environment. Radical changes to the original Plant Variety Rights Act, which suit large seed and agribusiness interests, were made without appropriate consultation and ignored widespread community concern about monopoly control of the food supply through plant patenting. Safeguards for farmers, consumers, small breeders and the environment have been written out of the new Bill. ACF argues specifically that the Bill's scope should not include genetically engineered varieties, especially where the plant contains genes from animals, humans or microbes.

## Shoalwater Bay

The Commonwealth Commission of Inquiry into Shoalwater Bay in Queensland strongly points to a case for foregoing mineral sand-mining in favour of conservation, in accordance with



## TOO MANY ENVIRONMENT LAWS

**In a report released in April, New Zealand legislates for sustainable development – lesson for Australia, ACF outlined the need for governments to adopt an orderly, comprehensive approach to environmental law reform.**

At the moment we have a confusing array of environmental protection, planning and resource management legislation. Current arrangements are cumbersome, expensive, and ineffective and fall well short of their environmental objectives. In contrast to New Zealand, according to ACF's Sustainable Agriculture Convener, Jason Alexandra, Australia has far too many laws.

For example: Australia has 58 acts covering air pollution, NZ has 5; we have 78 for solid waste disposal, NZ has 2; we have 290 acts covering nature conservation, NZ has 27, and so the list goes on.

Australia's resource management, planning and environmental laws have evolved in an ad hoc and reactive fashion. Our complex, overlapping and sometimes conflicting laws have resulted in confusions, delays, inaction and poor environmental outcomes. The problems are aggravated by ill-defined responsibilities between the three spheres of government.

Since federation, state and federal governments have enacted hundreds of environmental laws, which now need rationalising. New Zealand implemented a major law and administration reform process in response to the same problem that Australia now faces. The ACF report advocates addressing law and administration reforms through an ordered process similar to that adopted in NZ, instead of through further piecemeal or hasty reforms.

**A public seminar on 'Legislating for Ecologically Sustainable Development: lessons from NZ' will be held on Wed 22 June, 5.00 - 8.00 at Monash Conference Centre, level 7, 30 Collins St, Melbourne. To register contact Jean Lyon 03 903 8754.**

ACF's submissions. Although the interim report makes no recommendations it confirms the very high conservation values of Shoalwater Bay and throws considerable doubt on the proposition to mine in the area. The Commission acknowledges the area's high ecological integrity, biodiversity and wilderness values, and recognises that it makes significant contributions to the economy, particularly through research, defence, conservation, commercial fishing and water catchment use.

### Guidelines for Global Business

An ACF discussion paper entitled *Guidelines for Global Business* was released in February, highlighting the need to bring activities of transnational corporations onto an ecologically sustainable footing. TNCs are increasingly seen as influencing global, regional and national economics beyond the control of nation states or existing international institutions, especially in developing countries. Steps must be taken to ensure that Australian companies conduct their activities overseas in an environmentally and socially responsible manner.

Discussion of Guidelines for Global Business is on the 1994 agenda of the UN Commission on TNCs.

### Clearing in NSW

It is a common misconception that most of Australia's vegetation was cleared by past generations. The truth is that unregulated clearing of native vegetation on Australia's farmlands, using bulldozers and aerial application of herbicide, is occurring at alarming rates in all States except South Australia, especially bushland in cropping and grazing areas of NSW and Queensland. A study in NSW reported in *Search* (Feb '94) documented that in clearing some cropping areas of northern NSW in 1977-85, over 70% of remaining native vegetation was removed. If current clearing rates continue there will be negligible vegetation left in vast areas of NSW by 2000. The severe consequences of overclearing is understood but largely ignored by government, who ACF continues to call on to impose regulations.

Contact Michael Krockenberger for details on ACF Campaigns on 03 416 1166

## ACF Mining Industry Report

ACF launched a major report *Mining and Ecologically Sustainable Development* in May 1994 when the ACF National Executive met to discuss the need for improvements in the mining industry's environmental performance and fast-tracking of major projects. The report is a comprehensive analysis of changes required by the industry if it is to become ecologically sustainable. In recent years the environmental performance of the industry has improved in areas such as pollution control and mine site rehabilitation. However, if the industry is to develop in a sustainable manner it must also deal with its wider responsibilities, within publicly accountable and thorough EIA procedures. It must also accept that an expanded environment estate, excluding mining and exploration, is necessary if biological diversity is to be protected. These vital principles are currently at stake in McArthur River and Shoalwater Bay. The report contains over 60 recommendations on actions required by the mining industry and governments.

The key recommendations are that:

- all environmental regulation be transferred from resource development agencies to government agencies;
- a national audit of rehabilitated mines be conducted to establish rates of success & identify further action needed;
- codes of conduct be developed for exploration and mining, and enforced to ensure Australian companies operating overseas adhere to the highest environmental standards;
- no mining be permitted in coastal dune areas of high conservation value;
- protection of Aboriginal sacred sites be absolute and enshrined in law;
- the system of royalty payments be made more consistent nationally and remaining exemption be removed;
- greater emphasis be placed on demand management for minerals involving recycling, increased efficiency of use and substitution.

**For further information contact Peter Kinrade at ACF on 416 1166.**



**WORLD  
ENVIRONMENT  
DAY 1994  
SUNDAY 5th JUNE**

**Melbourne:**

World Environment Day will be an exciting event with activities, displays and music in Swanston Street Walk (opposite the City Square).

The ACF theme this year is **Water**, one of our most precious resources. Come along and join in the fun from 11 am to 4 pm.

ACF will be also launching its **fantastic water poster** that soon will be widely available.

**For information about the ACF water poster contact Tim Fisher on 03 416 1166.**

**THE ACF MELBOURNE SHOP  
HAS CROSSED THE ROAD!**

THE NEW ADDRESS IS:  
**207 SMITH STREET, COLLINGWOOD  
PHONE 415 1778**

**ACF PUBLIC MEETING**

at the

Australian Museum  
William Street, Sydney

**6.30 pm Friday July 15**

**\$3 Hallstrom Theatre \$3**

**Population/ Affluence / Technology**

The population impact on the environment and Australia's population carrying capacity.

**Guest speaker**

**Senator Margaret Reynolds**

(Convener, Population Working Group  
-Parliamentarians for Global Action)

Please support the Sydney Branch -  
publicise this meeting as widely as possible

You are invited to attend  
**Sydney Branch Meetings** held  
at ACF, 1st floor,  
33 George St, The Rocks  
6.30 - 8.30 pm  
on Tuesdays:  
June 14, July 12, August 9  
Enquiries: Gordon Hocking 528 6091

**ACF SYDNEY SHOP**

**33 George St, The Rocks**

**ph 247 4754**

**Open 7 days 10.30 - 5.00**

ACF's Sydney shop has just signed a new 4 year lease and moved into a historic 19th century cottage at 33 George Street in the Rocks. Many ACF members will remember the shop's unpretentious beginnings on the 3rd floor of the Argyle Centre. When the Argyle Centre closed for renovation at the end of 1992 the shop continued trading as The Environment Shop in the premises of the Nature Conservation Council of NSW.

This latest move to 33 George Street sees the shop re-united with ACF's Sydney office. The shop has been completely refitted in accordance with the heritage guidelines of the Sydney Cove Authority and ACF's own environmental requirements.

After 9 years of successful trading ACF's oldest shop is poised to begin a new era. It will continue to be staffed by volunteers, thus minimising overheads and increasing the financial return to ACF. Throughout the recent move, morale amongst shop volunteers has remained high. The move would not have been accomplished without their dedication.

ACF's new Sydney shop and office will be officially opened at a date to be set. In the meantime, everyone is invited to visit. We think you will be pleasantly surprised and not a little proud of what has been achieved.

Ken Ferrier, Shop Manager



**SYDNEY NORTHERN REGION  
BRANCH**

**WHERE IS THE ACF HEADING?  
A FORUM FOR MEMBERS**

Come and have your say.  
Penny Figgis AM, vice-president, will talk briefly about the issues and challenges facing ACF in the '90s and the relevance of the organisation to its members. You are invited to come along, meet other members, ask questions and have your say.

A brief Branch AGM will be held immediately before commencement of the forum.

**Wednesday 22 June  
7.00pm**

Ku-Ring-Gai Library Meeting Room  
799 Pacific H'way (cnr Park Ave)  
Gordon

Refreshments will be served  
Enquiries: Ian Landon Smith 487 3411

**Greencoast Environment  
Festival '94**

The ACF Central Coast Branch is pleased to announce the 2nd Greencoast Environment Festival, to be held on Sunday 6th November from 10am to 4pm at the Nincumba Mountain Reserve, off Avoca Drive, Kincumber, NSW (14km west of Gosford).

The primary purpose is to build awareness of the environment as an issue in all our lives.

We are planning musical entertainment, ranging from rock, jazz, to classical, with guided walks, demonstrations, food and craftstalls and inspiring speakers such as Tricia Caswell.

For further information contact the Go Green Shop, 100 Mann Street, Gosford, NSW 2250.  
Ph John Wiggin, 043 236 774.



THE BEST THE WHITSUNDAYS HAVE TO OFFER...

## SAIL WHITSUNDAY YACHT CHARTERS

Well apart from being one of the world's top boating locations there is a myriad of fascinating activities available to you while cruising the Whitsunday Islands. The WHITSUNDAYS fall within the precincts of the Great Barrier Reef Marine Park

If you have never considered the possibility of skippering your own yacht (motor sailers and catamarans also available) amongst the 74 fabulous Whitsunday islands then maybe you should think again! Lying behind the protective arm of the Great Barrier Reef they are never subjected to ocean swell.

Specialising in a highly personalised style of boating holiday is SAIL WHITSUNDAY YACHT CHARTERS, owned and operated by experienced blue water sailors Bill and Jacinta Lipson. Through their past experience in the industry they perceived a need for a company devoted solely to service quality. It's not surprising to learn therefore that this philosophy has put Sail Whitsunday in the enviable position of having won three Whitsunday Tourism Awards. Also they were finalists in the 1993 Queensland Tourism Awards – not an easy feat in the highly competitive Queensland tourism industry.

SAIL WHITSUNDAY are happy to spend time with you sail training, briefing and generally familiarising you with the boat and the area to ensure you have a relaxed and troublefree cruise. Courtesy Vehicle, Courtesy Bus, Windsurfers, Diving Gear and Provisions are just some of the extras that can be provided aboard your floating holiday home.

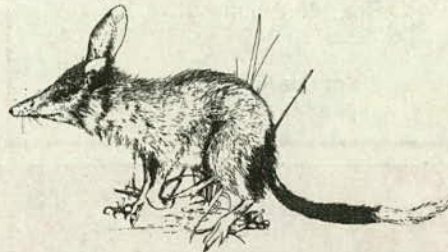
For a full colour brochure on bareboat chartering in the Whitsundays call Jacinta Lipson, tollfree 008 075 045 or fax 079 467 044.



## IN THE CURRENT ISSUE OF *HABITAT*

The latest issue of ACF's colour magazine *Habitat Australia* is the first by our new editor, Chris Smyth, following Merrilyn Julian's departure, who after four years with ACF has gone on to Penguin. *Habitat* continues to cover issues which are key concerns for ACF. This issue we focus on:

- the launch of Pedder 2000, the bid to restore the lake to its pre-1972 state, by Helen Gee;
- Warren McLaren's first-hand account of the adventures of the ACF CoastWalkers;
- ACF's quest to green its headquarters;
- the ACTU-ACF Green Jobs Report, to be released in June, is covered by Melinda Nutting;
- we profile the motives and aspirations of three people active in the environment sector;
- Robert Rosen investigates the Local Exchange Trading System, or LETS, an alternative to the money-market.
- Tibet is the scene of Nick Wilson's story on Ladakh, a culture striving to maintain its identity in the 20th century.



### Wilderness Red Index - a valuable tool

The Colong Foundation has launched an online version of its Wilderness Red Index. The Index is a detailed inventory of wilderness areas in Australia. Its information can be used as a campaign tool, or updated by those familiar with an area.

To obtain details on accessing the computer database version of the Wilderness Red Index, or for printed copies of individual wilderness areas, contact the Colong Foundation for Wilderness on 02 - 247 4714.

We wish to pay tribute to Richard Taylor, who passed away in October 1993. Although unemployed, Richard had been a member and generous supporter since 1988. Richard's father has continued Richard's membership in his son's memory.

### Wild Places raffle

Imagine a holiday limited only by the time that you can escape for...

Imagine – what you would do with an \$8,000 travel voucher (First Prize in the **Wild Places raffle**), or the excitement of a two week Intrepid Vietnam adventure (Second Prize), or the Ticket Seller's Prize of a weekend of whale watching at Hervey Bay. By buying a ticket in the **Wild**

**Places raffle** you will be helping to protect the Earth's wild places and at the same time you will have a chance to visit the wild places of your dreams.

- **Phone 008 332 510 today to order your tickets. \$2 per ticket** (30 tickets per book). The environment will be a winner and so could you.

ACF Wild Places raffle drawn 10th June 1994.

Dear ACF  
Thank you for giving us the best weekend AWAY, just for helping keep Australia alive and healthy!! The hotel was very 5 starrish and we looked like country bumpkins!! Having never been to Sydney before I just loved being there – very fast moving and big! I'm quite happy with my little town of Cairns. Once again thank you and sorry for taking so long to write.  
from Michelle Thomson



**RITCHIES Supermarket in Frankston, Victoria, forwards a donation to ACF each month, representing 1% of all purchases made by their customers who nominate ACF in their Community Benefit Card Donation program. If you live in Frankston, make sure you nominate ACF when shopping at Ritchies.**

#### FUNDRAISER

ACF members are invited to attend the Melbourne Chamber Orchestra's performance of Handel, Haydn, Gordon Kerry and Strauss at 3PM SUNDAY JULY 31 at the Yarra Valley Arts Centre & 3PM SUNDAY AUGUST 7 at Melba Hall. Normally \$26, tickets for ACF are only \$18 (\$12 con). Contact Diana at ACF on 416 1166.

#### Watching Wattles

How do birds in Australia utilise acacias for food, shelter or nesting?

#### BOCA Birds and Wattles Survey

Recording sheets and additional information available from Bird Observers Club of Australia PO Box 185, Nunawading, Vic 3131 Tel: 03 877 5342 Fax: 03 894 4048

Your participation in this valuable survey is invited.

#### ABORIGINAL PAINTINGS

ACF is proud to announce the arrival of a new Aboriginal art exhibition of canvases and boards from Central Australia. The works are on display at the ACF headquarters and shop in Melbourne. Women artists from the Jukurrpa Artists cooperative have painted traditional stories and activities in the sand painting tradition. Works are being sold directly and a percentage of the price goes to ACF. These beautiful paintings are of a high standard at a very reasonable price and are well worth a visit.

#### ACF LIBRARY

#### THE BOOKS FOR BOOKS SALE IS ON AGAIN!

The Library at Gore Street is desperately seeking saleable pre-loved books for our booksale. Call Lesley Dalziel on 03 416 1166 if you can donate books or time. The Venue for the next sale will be announced in the next CN.



#### GREEN HOMES

ACF has 3 registered Green Home builders who will build houses to your design and to the ACF guidelines. If you're thinking of building and are looking for appropriate design please contact ACF for details on the following builders:

Fasham in Melbourne, Kevin Bohm in Albury, and Marklews in Melbourne.

#### Green Home Guidelines

are available from ACF for \$20. Send a cheque or provide credit card details to Trish McGuane at ACF or for more information contact Trish on ph 03 416 1166 or fax 03 416 0767.

### YES! I want to become a member of ACF!

Use the form below for your new membership.



Mr / Ms / Mrs / Miss \_\_\_\_\_

(Given name)

(Family name)

Address \_\_\_\_\_

P'code \_\_\_\_\_ Phone: \_\_\_\_\_ (bh) \_\_\_\_\_ (ah) \_\_\_\_\_

#### Payment details

Enclosed is ☐ cheque/money order, or charge my

☐ Bankcard ☐ Mastercard ☐ Visa ☐ Amex ☐ Diners

Card number \_\_\_\_\_

Expiry date \_\_\_\_ / \_\_\_\_ Signature \_\_\_\_\_

#### Membership categories

- ☐ Individual Membership (includes quarterly newsletter) \$39.00
- ☐ Concession Membership \$22.00
- ☐ Schools/Community Groups \$55.00
- ☐ Household Membership \$55.00

(NB: Overseas and corporate rates are available on request)

☐ plus Habitat (special membership discount rate) \$35.00

☐ or Habitat only (for non-members) \$44.00

☐ Donation (tax deductible) \$ \_\_\_\_\_

(Donors of \$1,000 or more may be eligible for Life Membership)

TOTAL \$ \_\_\_\_\_

☐ I'd like information on Earthfund, ACF's regular donation program.

☐ Please send me information on leaving a bequest to ACF.

Australian Conservation Foundation AFEN 007 488 482, 340 Gore St. Fitzroy, Vic

Forward to: ☎ 3065. Or join by phone on (03) 416 1166 or 008 332 510.

MNAN